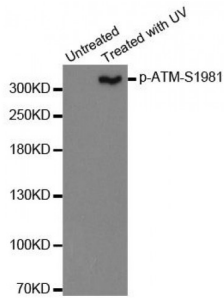
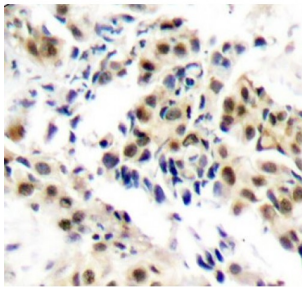


ATM (pS1981) Antibody

Catalogue No.: abx000358



Western blot analysis of extracts from HeLa cells using phospho-ATM-S1981 antibody (abx000358).



Immunohistochemistry of paraffin-embedded human breast carcinoma using Phospho-ATM-S1981 antibody (abx000358).

ATM (pS1981) Antibody is a Rabbit Polyclonal antibody against ATM (pS1981). The protein encoded by this gene belongs to the PI3/PI4-kinase family. This protein is an important cell cycle checkpoint kinase that phosphorylates; thus, it functions as a regulator of a wide variety of downstream proteins, including tumor suppressor proteins p53 and BRCA1, checkpoint kinase CHK2, checkpoint proteins RAD17 and RAD9, and DNA repair protein NBS1. This protein and the closely related kinase ATR are thought to be master controllers of cell cycle checkpoint signaling pathways that are required for cell response to DNA damage and for genome stability. Mutations in this gene are associated with ataxia telangiectasia, an autosomal recessive disorder.

Target: ATM (pS1981)

Reactivity: Human

Host: Rabbit

Clonality: Polyclonal

Tested Applications: WB, IHC

Recommended dilutions: WB: 1/500 - 1/2000, IHC: 1/50 - 1/100. Optimal dilutions/concentrations should be determined by the end user.

Immunogen: Synthetic Peptide. A phospho specific peptide corresponding to residues surrounding S1981 of human ATM.

Purification: Affinity purified.

Form:	Liquid
Isotype:	IgG
Conjugation:	Unconjugated
Storage:	Aliquot and store at -20°C. Avoid repeated freeze/thaw cycles.
Molecular Weight:	Calculated MW: 350 kDa Observed MW: 351 kDa
Swiss Prot:	Q13315
GeneID:	472
Gene Symbol:	ATM
Concentration:	> 1 mg/ml
Buffer:	PBS, pH 7.3, 0.02% sodium azide, 50% glycerol.
Note:	This product is for research use only.