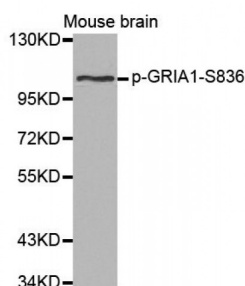


**GRIA1 (pS836) Antibody**

Catalogue No.: abx000404



Western blot analysis of extracts from mouse brain, using phospho-GRIA1-S836 antibody (abx000404).

GRIA1 (pS836) Antibody is a Rabbit Polyclonal antibody against GRIA1 (pS836). Glutamate receptors are the predominant excitatory neurotransmitter receptors in the mammalian brain and are activated in a variety of normal neurophysiologic processes. These receptors are heteromeric protein complexes with multiple subunits, each possessing transmembrane regions, and all arranged to form a ligand-gated ion channel. The classification of glutamate receptors is based on their activation by different pharmacologic agonists. This gene belongs to a family of alpha-amino-3-hydroxy-5-methyl-4-isoxazole propionate (AMPA) receptors. Alternatively spliced transcript variants encoding different isoforms have been found for this gene.

**Target:** GRIA1 (pS836)

**Clonality:** Polyclonal

**Reactivity:** Human, Mouse, Rat

**Tested Applications:** WB

**Host:** Rabbit

**Recommended dilutions:** WB: 1/500 - 1/2000. Optimal dilutions/concentrations should be determined by the end user.

**Conjugation:** Unconjugated

**Immunogen:** Synthetic Peptide. A phospho specific peptide corresponding to residues surrounding S836 of human GRIA1.

**Isotype:** IgG

**Form:** Liquid

**Purification:** Affinity purified.

**Storage:** Aliquot and store at -20°C. Avoid repeated freeze/thaw cycles.

**UniProt Primary AC:** P42261 ([UniProt](#), [ExpASY](#))

**UniProt Secondary AC:** B7Z2S0, B7Z2W8, B7Z3F6, B7Z9G9, D3DQI4, E7ESV8, Q2NKM6

**UniProt Entry Name:** GRIA1\_HUMAN

**Gene Symbol:** GRIA1

**GeneID:** [2890](#)

**String:** [9606.ENSP00000428994](#)

**Molecular Weight:** Calculated MW: 92 kDa, 93 kDa, 101 kDa, 102 kDa  
Observed MW: 102 kDa

**Buffer:** PBS, pH 7.3, 0.02% sodium azide, 50% glycerol.

**Concentration:** > 1 mg/ml

**Note:** This product is for research use only.