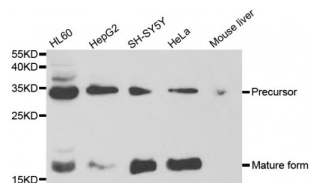


## Nerve Growth Factor (NGF) Antibody

Catalogue No.: abx000643



Western blot analysis of extracts of various cell lines, using NGF antibody (abx000643) at 1/1000 dilution.

NGF Antibody is a Rabbit Polyclonal antibody against NGF. This gene is a member of the NGF-beta family and encodes a secreted protein which homodimerizes and is incorporated into a larger complex. This protein has nerve growth stimulating activity and the complex is involved in the regulation of growth and the differentiation of sympathetic and certain sensory neurons. Mutations in this gene have been associated with hereditary sensory and autonomic neuropathy, type 5 (HSAN5), and dysregulation of this gene's expression is associated with allergic rhinitis.

**Target:** NGF

**Clonality:** Polyclonal

**Reactivity:** Human, Mouse

**Tested Applications:** WB

**Host:** Rabbit

**Recommended dilutions:** WB: 1/500 - 1/2000. Optimal dilutions/concentrations should be determined by the end user.

**Conjugation:** Unconjugated

**Immunogen:** A synthetic peptide of human NGF.

**Isotype:** IgG

**Form:** Liquid

**Purification:** Affinity purified.

**Storage:** Aliquot and store at -20°C. Avoid repeated freeze/thaw cycles.

**UniProt Primary AC:** P01138 ([UniProt](#), [ExPASy](#))

**Gene Symbol:** NGF

**GeneID:** [2708](#)

**KEGG:** hsa:4803

**String:** [9606.ENSP00000358525](#)

**Molecular Weight:** Calculated MW: 26 kDa  
Observed MW: 17 kDa, 33 kDa

**Buffer:** PBS, pH 7.3, 0.02% sodium azide, 50% glycerol.

**Concentration:** > 1 mg/ml

**Note:** This product is for research use only.