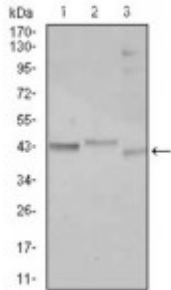


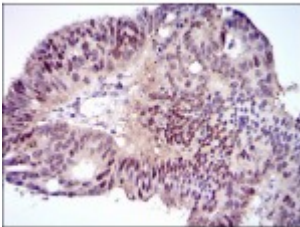
Abbexa Ltd, Innovation Centre, Cambridge Science Park, Cambridge, CB4 0EY, UK
Telephone: +44 (0) 1223 755950 - Fax: +44 (0) 1223 755951 - E-Mail: info@abbexa.com

C/EBP alpha Antibody

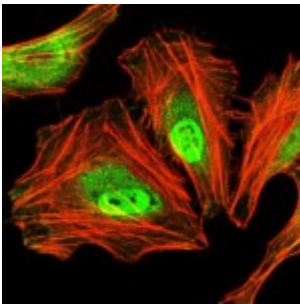
Catalogue No.: abx016069



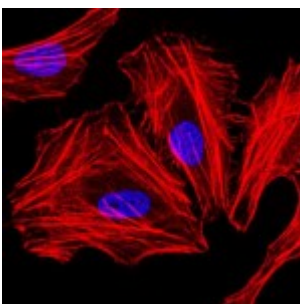
Western blot analysis using CEBPA antibody against Jurkat (1), k562 (2), and HepG2 (3) cell lysate.



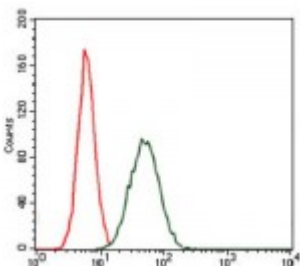
Immunohistochemical analysis of paraffin-embedded rectum tissues using CEBPA antibody with DAB staining.



Immunofluorescence analysis of HeLa cells. Blue: DRAQ5 fluorescent DNA dye. Red: Actin filaments have been labeled with Alexa Fluor-555 phalloidin.

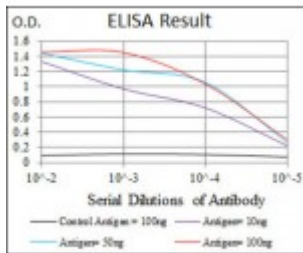


Immunofluorescence analysis of HeLa cells using CEBPA antibody (green). Blue: DRAQ5 fluorescent DNA dye. Red: Actin filaments have been labeled with Alexa Fluor-555 phalloidin.



Flow cytometric analysis of MCF-7 cells using CEBPA antibody (green) and negative control (red).

Abbexa Ltd, Innovation Centre, Cambridge Science Park, Cambridge, CB4 0EY, UK
 Telephone: +44 (0) 1223 755950 - Fax: +44 (0) 1223 755951 - E-Mail: info@abbexa.com



Red: Control Antigen (100ng) ; Purple: Antigen (10ng) ; Green: Antigen (50ng) ; Blue: Antigen (100ng).

The protein encoded by this intronless gene is a bZIP transcription factor which can bind as a homodimer to certain promoters and enhancers. It can also form heterodimers with the related proteins CEBP-beta and CEBP-gamma. The encoded protein has been shown to bind to the promoter and modulate the expression of the gene encoding leptin, a protein that plays an important role in body weight homeostasis. Also, the encoded protein can interact with CDK2 and CDK4, thereby inhibiting these kinases and causing growth arrest in cultured cells.

Target: C/EBP alpha

Reactivity: Human, Mouse, Rat

Host: Mouse

Clonality: Monoclonal

Tested Applications: ELISA, WB, IHC, IF/ICC, FCM

Recommended dilutions: ELISA: 1/10000, WB: 1/500 - 1/2000, IHC: 1/200 - 1/1000, IF/ICC: 1/200 - 1/1000, FCM: 1/200 - 1/400. Optimal dilutions/concentrations should be determined by the end user.

Immunogen: Synthesized peptide of human CEBPA (AA: C-RKSRDKAKRNVETKV).

Isotype: IgG₁

Conjugation: Unconjugated

Storage: Aliquot and store at -20 °C. Avoid repeated freeze/thaw cycles.

Molecular Weight: 42 kDa

GeneID: [1050](#) [12606](#) [24252](#)

Buffer: Ascitic fluid containing 0.03% sodium azide.

Availability: Shipped within 5-10 working days.

Note: This product is for research use only.