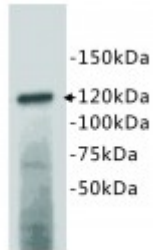


Abbexa Ltd, Innovation Centre, Cambridge Science Park, Cambridge, CB4 0EY, UK
Telephone: +44 (0) 1223 755950 - Fax: +44 (0) 1223 755951 - E-Mail: info@abbexa.com

CD133 Antibody

Catalogue No.: abx019041



WB: mouse kidney tissue lysate

CD133 Antibody is a Rabbit Polyclonal antibody against Human, Mouse and Rat.

Target: CD133

Reactivity: Human, Mouse, Rat

Host: Rabbit

Clonality: Polyclonal

Tested Applications: WB, IHC, IF/ICC

Recommended dilutions: Optimal dilutions/concentrations should be determined by the end user.

Immunogen: A synthetic peptide (conjugated with KLH) corresponding to near C-terminal of human CD133.

Purification: Immunogen affinity purified.

Isotype: IgG

Conjugation: Unconjugated

Storage: Aliquot and store at -20 °C. Avoid repeated freeze/thaw cycles.

Swiss Prot: [O43490](#)

GeneID: [8842](#)

Gene Symbol: PROM1

OMIM: [604365](#)

Abbexa Ltd, Innovation Centre, Cambridge Science Park, Cambridge, CB4 0EY, UK
Telephone: +44 (0) 1223 755950 - Fax: +44 (0) 1223 755951 - E-Mail: info@abbexa.com

HGNC: 9454

Ensembl: ENSG00000007062

Buffer: In TBS (pH7.4), 0.5% BSA, 40% Glycerol and 0.05% Sodium Azide.

Availability: Shipped within 5-10 working days.

Note: This product is for research use only.