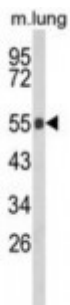
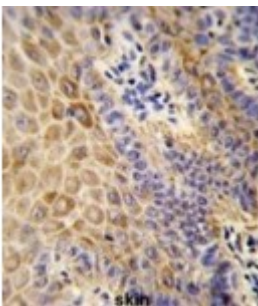
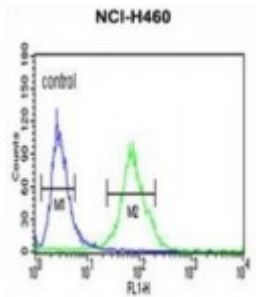


Abbexa Ltd, Innovation Centre, Cambridge Science Park, Cambridge, CB4 0EY, UK
Telephone: +44 (0) 1223 755950 - Fax: +44 (0) 1223 755951 - E-Mail: info@abbexa.com

GC Antibody

Catalogue No.: abx034166



GC is a protein that cleaves the beta-glucosidic linkage of glycosylceramide, an intermediate in glycolipid metabolism.

Target:	GC
Reactivity:	Human, Mouse
Host:	Rabbit
Clonality:	Polyclonal
Tested Applications:	ELISA, WB, IHC, FCM
Recommended dilutions:	Optimal dilutions/concentrations should be determined by the end user.
Immunogen:	Human GC.

Abbexa Ltd, Innovation Centre, Cambridge Science Park, Cambridge, CB4 0EY, UK
Telephone: +44 (0) 1223 755950 - Fax: +44 (0) 1223 755951 - E-Mail: info@abbexa.com

Purification:	Peptide Affinity Purified Rabbit Polyclonal Antibody.
Isotype:	IgG
Conjugation:	Unconjugated
Specificity:	This GC antibody is generated from rabbits immunized with a KLH conjugated synthetic peptide between 337-365 amino acids from the Central region of human GC.
Storage:	Aliquot and store at -20 °C. Avoid repeated freeze/thaw cycles.
Swiss Prot:	P04062
Buffer:	PBS with 0.09% (W/V) sodium azide. This antibody is purified through a protein A column, followed by peptide affinity purification.
Availability:	Shipped within 5-10 working days.
Note:	This product is for research use only.